

MONTHLY MEMBERSHIP PROGRESS REPORT

LOCATION INDIA

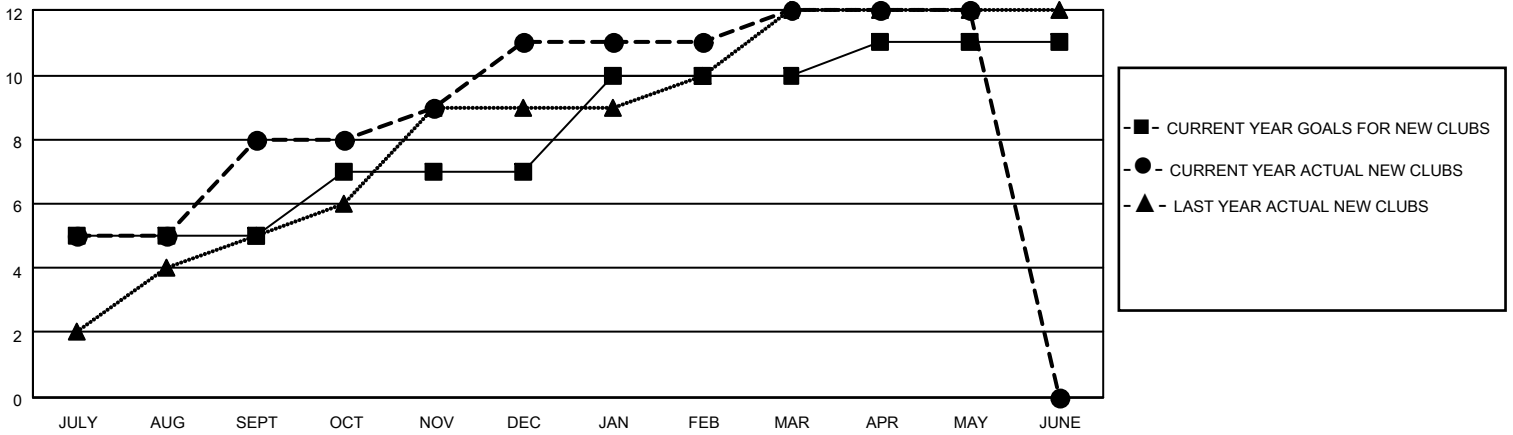
District 317 D

Results as of: 5/31/2023

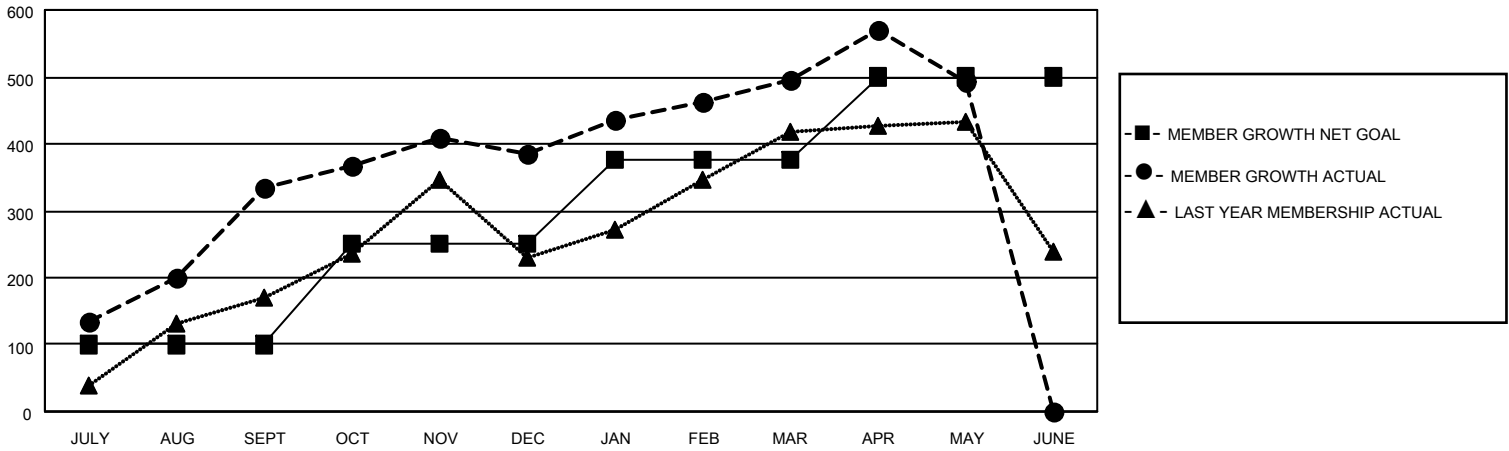
Clubs			
RESULTS FOR 2022-2023			
QUARTER	NEW CLUB GOAL	NEW CLUBS	DROPPED CLUBS
JULY/AUG/SEPT	5	8	1
OCT/NOV/DEC	2	3	0
JAN/FEB/MAR	3	1	2
APR/MAY/JUNE	1	0	1

Members			
RESULTS FOR 2022-2023			
QUARTER	MEMBER GROWTH NET GOAL	MEMBER GROWTH ACTUAL	DROPPED MEMBERS ACTUAL (including transfers)
JULY/AUG/SEPT	100	394	47
OCT/NOV/DEC	150	174	123
JAN/FEB/MAR	125	206	82
APR/MAY/JUNE	125	135	135

GOALS AND ACTUAL NEW CLUBS CUMULATIVE



GOALS AND ACTUAL MEMBERS CUMULATIVE



DROPPED CLUBS: 4

100 CLUBS OF 121 ADDED 1 OR MORE NEW MEMBERS

GENDER DISTRIBUTION

MALE	3,378 (75.49%)
FEMALE	1,096 (24.49%)
NON BINARY	0 (0.00%)
PREFER NOT TO ANSWER	1 (0.02%)

DROPPED MEMBERS

DECEASED	11
CLUB CANCELLED	127
OTHER	249
TOTAL	387

[CLICK HERE FOR CUMULATIVE MEMBERSHIP DATA](#)

TOTAL FAMILY UNIT MEMBERS 1,591

FAMILY MEMBERS PAYING HALF DUES 818